

BALAJI STEEL INDUSTRIES

HOLISTIC STEEL SOLUTIONS



ABOUT US

BALAJI STEEL INDUSTRIES IS AN UPCOMING FIRM IN THE DYNAMIC STEEL TRADING BUSINESS, HAVING ESTABLISHED ITS ROOTS IN THE FAST-CHANGING CITY OF BANGALORE, KARNATAKA IN THE YEAR 2017.

THE COMPANY SET OFF ON ITS MISSION TO BE AN INTEGRAL PARTNER IN THE STEEL SUPPLY CHAIN FOR NOT JUST THE LARGE CORPORATIONS, BUT ALSO THE MORE MODEST **MSMEs** OF THE COUNTRY.

FOR THE SAME, BSI TIED UP WITH JINDAL STEEL AND POWER LIMITED (JSPL), STEEL AUTHORITY OF INDIA LIMITED (SAIL) & ARCELOR MITTAL NIPPON STEEL (AMNS) TO CATER ALL ITS CLIENTS FROM MULTIPLE STEEL CONSUMING SECTORS.

VISION

THE DIRECTORS AIM TO REDUCE INVENTORY LEVELS IN THE STEEL DISTRIBUTION INDUSTRY ALL THE WHILE, REDUCING THE TIME TAKEN TO SERVICE CUSTOMER ORDERS THROUGH IMPLEMENTATION OF MODERN-DAY TECHNOLOGIES SUCH AS DATA ANALYTICS FOR STOCK OPTIMIZATION.

FACILITIES - THE BSI EDGE

- 1) TWO COVERED SHEDS OF OVER 20,000 SQ.FT. EACH.
- 2) EOT CRANES FOR FAST AND EASY LOADING AND UNLOADING.
 - 40 TONS - 1 CRANE
 - 10 TONS - 3 CRANES
 - 5 TONS - 1 CRANE
- 3) IN-HOUSE WEIGHING SCALES FROM ESSAE FOR ACCURATE & QUICK WEIGHMENTS.
 - 40 TONS - 1 SCALE
 - 15 TONS - 1 SCALE
- 4) IN HOUSE CUT-TO-LENGTH LINE FOR CR, GP, HR AND HRPO COILS.
- 5) IN HOUSE ROLL DECK FORMING MACHINE.
- 6) VAST NETWORK OF TRANSPORTERS IN ADDITION TO IN-HOUSE FLEET OF VEHICLES.
- 7) STRONG TEAM OF EMPLOYEES TO ENSURE SMOOTH INTERACTIONS FROM QUOTATION TO DELIVERY.



PRODUCT MIX

1. CTL, COILS & PLATES

CUT TO LENGTH (CTL) MACHINE

OUR CUTTING MACHINE IS ONE OF THE LATEST IN THE INDUSTRY WHICH IS EQUIPPED WITH IOT (INTERNET OF THINGS) IMPROVING EFFICIENCY & ENABLING IN-TIME DELIVERY TO CUSTOMERS. THE BASIC PROCESS INVOLVES: DECOILING, LEVELLING & CUTTING THE COIL INTO SHEETS OF REQUIRED SIZES, BY THE HELP OF MULTIPLE SUB-MACHINES LIKE THE DE-COILER, STRAIGHTENER, 6 HI PRECISION LEVELER, PINCH ROLLER, FLYING SHEAR, BELT CONVEYOR & AUTO STACKER.

CAPACITY	-	0.3 - 3.15MM X 1650MM
HOLDING CAPACITY	-	35 MT
MATERIAL	-	CR/GP
LINE SPEED	-	50 MPM
NO. OF CUTS	-	20 CUTS OF 2000MM LENGTH
ACCURACY	-	± 0.5 MM/M IN LENGTH ABOVE 1000MM
FLATNESS	-	75% CORRECTION TO INPUT SHEET "I VALUE"

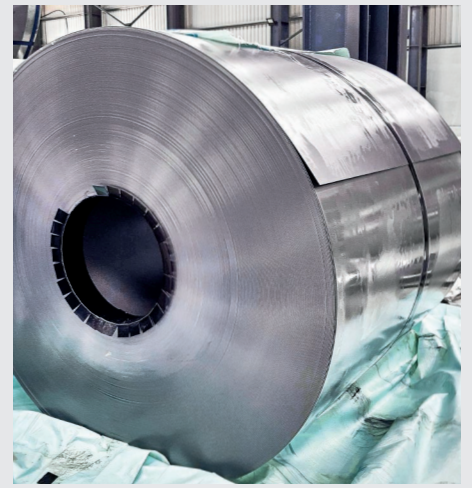
<u>HR COILS & PLATES</u>
THICKNESS: 1.6MM - 180MM
WIDTH: 900MM - 3000MM
GRADES: E250, E350, E410, E450 (A, BR, C) BOILER ASTM

<u>GP COILS & SHEETS</u>
THICKNESS: 0.2MM - 3.2MM
WIDTH: 200MM - 1500MM
SPANGLE: ZERO REGULAR MINIMIZED
COATING: 80 GSM - 600 GSM

<u>CR COILS & SHEETS</u>
THICKNESS: 0.4MM - 3.2MM
WIDTH: 500MM - 1550MM
GRADES: C1 C2 D, DD EDD



**AM/NS
INDIA**



posco



JSW Steel

2. STRUCTURE

UNIVERSAL BEAMS (UB)
UB 203 X 133 X 25 / 30
UB 254 X 146 X 31 / 37 / 43
UB 305 X 165 X 40 / 46 / 54
UB 356 X 171 X 45 / 51 / 57 / 67
UB 406 X 178 X 54 / 60 / 67 / 74
UB 457 X 152 X 52 / 60 / 67 / 74 / 82
UB 457 X 191 X 67 / 74 / 82 / 89 / 98
UB 533 X 210 X 82 / 92 / 101 / 109 / 122
UB 610 X 229 X 101 / 113 / 125 / 139

INDIAN STANDARD MEDIUM BEAMS (ISMB)
ISMB 100 X 50 X 8.9
ISMB 125 X 65 X 13.1
ISMB 150 X 75 X 15
ISMB 200 X 100 X 24.6
ISMB 250 X 125 X 37
ISMB 300 X 140 X 46
ISMB 350 X 140 X 52
ISMB 400 X 140 X 62
ISMB 450 X 150 X 72
ISMB 500 X 180 X 86
ISMB 600 X 210 X 122

NARROW PARALLEL BEAMS (NPB)
NPB 200 X 100 X 18 / 22 / 25
NPB 300 X 150 X 42 / 49
NPB 350 X 170 X 50 / 57 / 66
NPB 400 X 180 X 57 / 66 / 75
NPB 450 X 190 X 67 / 77 / 92
NPB 500 X 200 X 79 / 90 / 107
NPB 600 X 220 X 107 / 122 / 154

WIDE PARALLEL BEAMS (WPB)
WPB 320 X 300 X 74 / 97 / 126 / 245
WPB 600 X 300 X 128 / 177 / 211 / 285
WPB 700 X 300 X 149 / 204 / 240 / 300
WPB 800 X 300 X 171 / 224 / 262 / 317
WPB 900 X 300 X 251 / 291

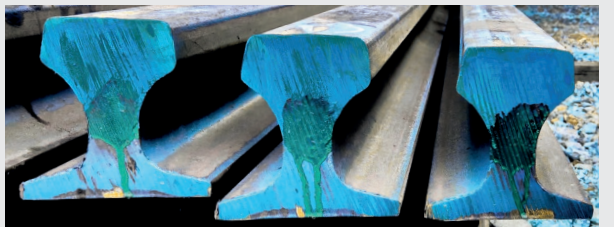
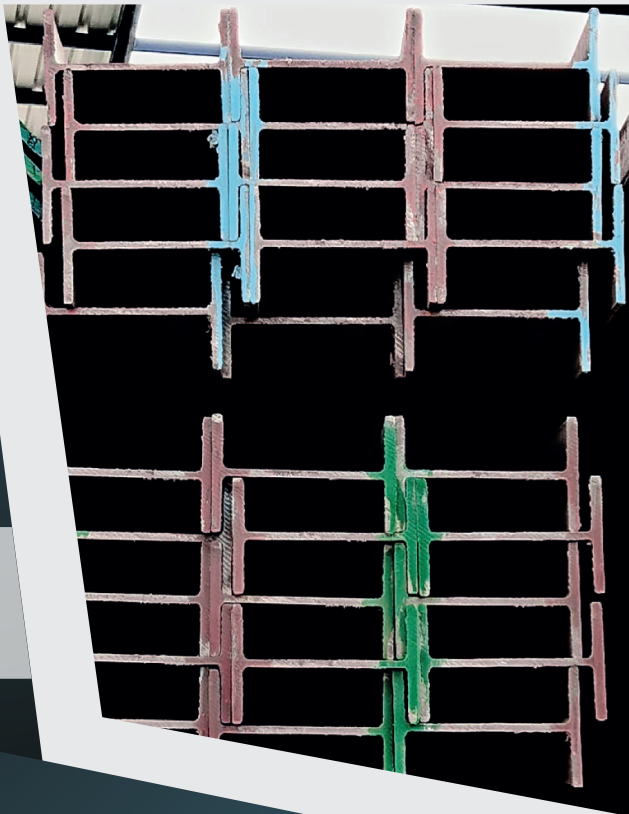
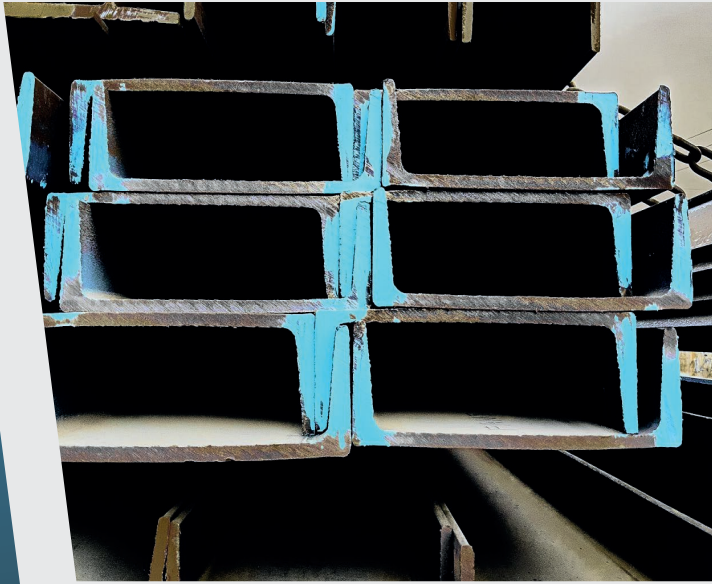
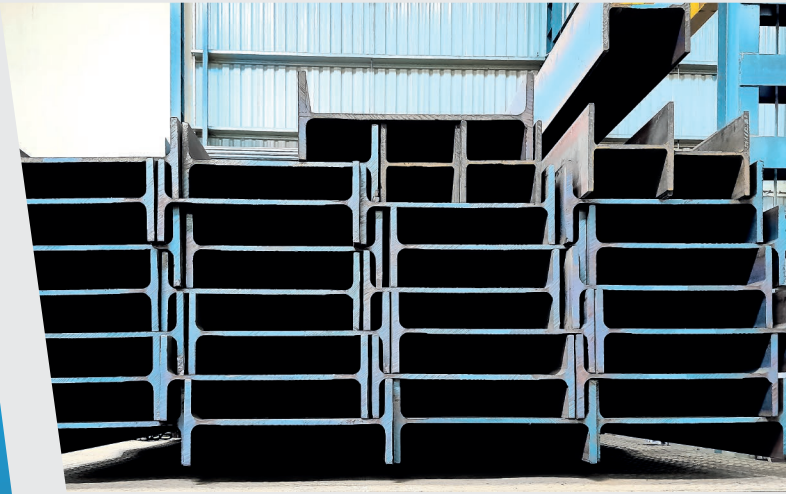
UNIVERSAL COLUMNS (UC)
UC 152 X 152 X 23 / 30 / 37
UC 203 X 203 X 46 / 52 / 60 / 71 / 86
UC 254 X 254 X 73 / 89 / 107 / 132 / 167
UC 305 X 305 X 97 / 118 / 137 / 158 / 198
UC 356 X 368 X 129 / 153 / 177 / 202
UC 356 X 406 X 235 / 287

INDIAN STANDARD ANGLES (ISA)
ISA 50 X 50 X 5 / 6
ISA 65 X 65 X 5 / 6 / 8
ISA 75 X 75 X 6 / 8 / 10
ISA 90 X 90 X 6 / 8 / 10 / 12
ISA 100 X 100 X 6 / 8 / 10 / 12
ISA 110 X 110 X 8 / 10 / 12
ISA 120 X 120 X 8 / 10
ISA 130 X 130 X 8 / 10 / 12 / 16
ISA 150 X 150 X 10 / 12 / 16 / 18 / 20
ISA 200 X 200 X 12 / 16 / 18 / 20 / 25
ISA 250 X 250 X 25 / 28 / 32 / 35

INDIAN STANDARD MEDIUM CHANNELS (ISMC)
ISMC 75 X 40 X 5.7 / 6.7 / 7.14
ISMC 100 X 50 X 8.0 / 9.5
ISMC 125 X 65 X 13.3
ISMC 150 X 75 X 16.8
ISMC 175 X 75 X 19.9
ISMC 200 X 75 X 22.3
ISMC 250 X 80 X 30.6 / 34.6
ISMC 300 X 90 X 36.3
ISMC 400 X 100 X 50.1

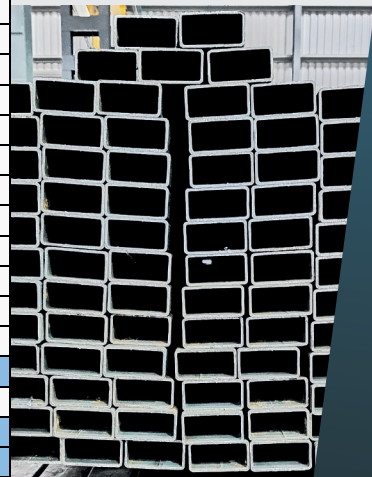
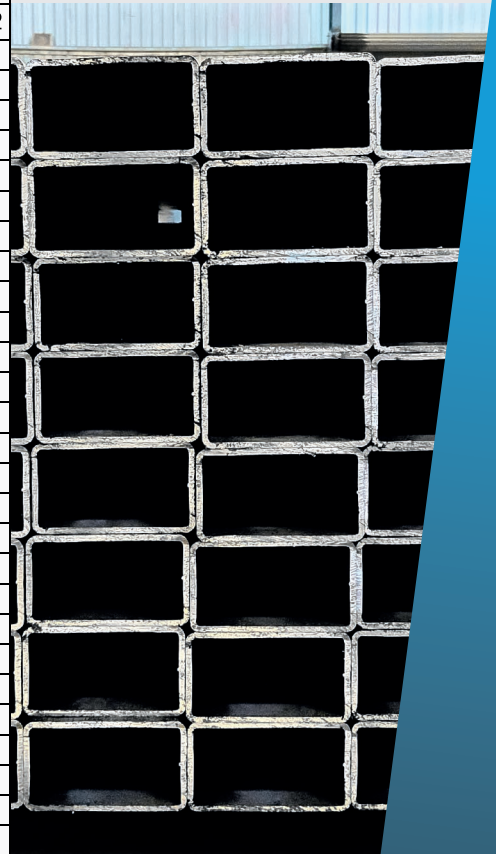
TRACK RAILS & CRANE RAILS
50 LBS
60 LBS
90 LBS
IRS 52
UIC 60
ISCR 80
ISCR 100

आर.आइ.एन.एल. RINL
VIZAG
STEEL
 Pride of Steel



3. Tubes and Pipes

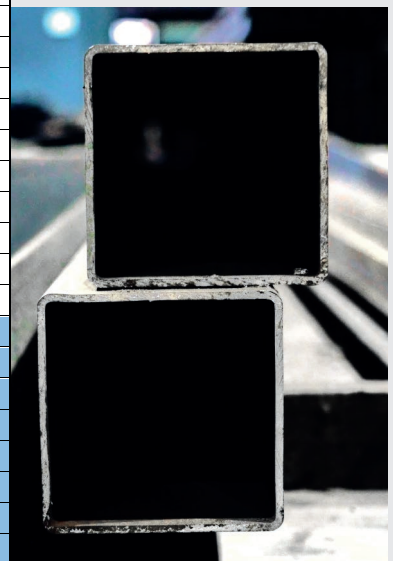
RECTANGULAR HOLLOW SECTION (RHS)																		
SIZE	0.8	1	1.2	1.4	1.6	2	2.2	2.6	2.9	3.2	3.6	4	4.5	5	6	8	10	12
25 X 20																		
26 X 13																		
30 X 20																		
40 X 20																		
40 X 10																		
40 X 25																		
45 X 35																		
50 X 25																		
50 X 30																		
50 X 40																		
66 X 33																		
60 X 30																		
60 X 40																		
75 X 25																		
75 X 30																		
75 X 40																		
75 X 50																		
80 X 40																		
96 X 48																		
100 X 50																		
120 X 60																		
120 X 80																		
122 X 61																		
130 X 50																		
145 X 82																		
150 X 30																		
150 X 50																		
150 X 75																		
150 X 100																		
160 X 80																		
172 X 92																		
180 X 60																		
180 X 120																		
200 X 100																		
200 X 150																		
220 X 140																		
240 X 120																		
250 X 100																		
250 X 150																		
300 X 150																		
300 X 200																		
300 X 100																		
350 X 250																		
400 X 200																		



LEGEND - - AVAILABLE SIZES



SQUARE HOLLOW SECTION (SHS)																		
SIZE	1.8	1	1.2	1.4	1.6	2	2.2	2.6	2.9	3.2	3.6	4	4.5	5	6	8	10	12
12 X 12																		
15 X 15																		
20 X 20																		
25 X 25																		
30 X 30																		
32 X 32																		
35 X 35																		
38 X 38																		
40 X 40																		
45 X 45																		
50 X 50																		
55 X 55																		
60 X 60																		
65 X 65																		
70 X 70																		
72 X 72																		
75 X 75																		
80 X 80																		
90 X 90																		
91.5 X 91.5																		
100 X 100																		
110 X 110																		
113 X 113																		
120 X 120																		
125 X 125																		
140 X 140																		
150 X 150																		
175 X 175																		
180 X 180																		
200 X 200																		
220 X 220																		
225 X 225																		
250 X 250																		
275 X 275																		
300 X 300																		



CIRCULAR HOLLOW SECTION (CHS)														
SIZE	1.6	1.8	2	2.3	2.6	2.9	3.2	3.6	4	4.5	5	6	8	10
21.3 OD														
26.9 OD														
33.7 OD														
42.4 OD														
48.3 OD														
60.3 OD														
76.1 OD														
88.9 OD														
101.6 OD														
114.3 OD														
127.0 OD														
139.7 OD														
152.4 OD														
165.1 OD														
168.3 OD														
193.7 OD														
219.1 OD														
244.5 OD														
273.0 OD														
323.9 OD														
355.6 OD														

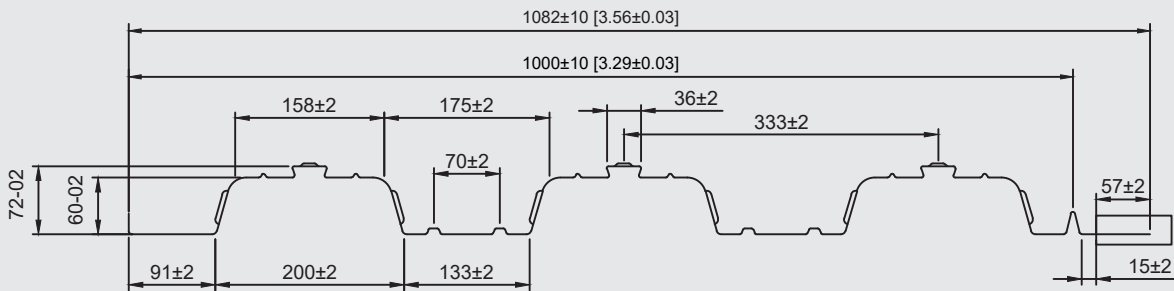




HELPING YOU GO FROM BUILD TO BUILT
IN NO TIME

BUILD-DECK 60

PRODUCTS DATA SHEET - FLOOR DECK - PROFILE DETAILS & SECTIONAL PROPERTIES



BENEFITS

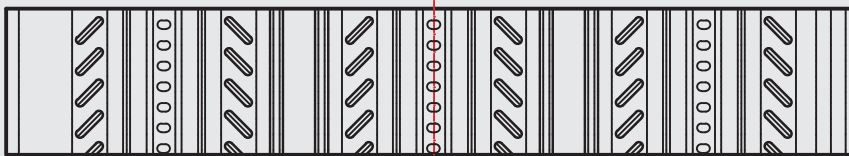
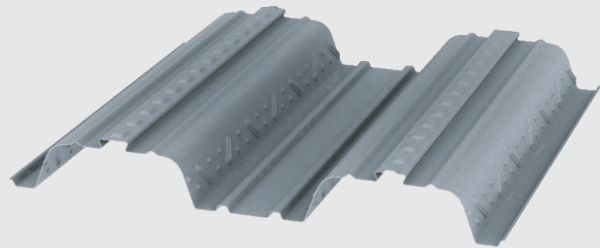
- REDUCED CONCRETE VOLUME
- ENHANCED SPEED OF INSTALLATION DUE TO THE 1M COVER WIDTH
- TROUGH STIFFENERS POSITIONED TO ENSURE CENTRAL STUD POSITION

GAUGES

- 0.9MM
- 1.0MM
- 1.2MM

SPECIFICATION

- 1000MM COVER WIDTH
- 60MM DEEP (72MM TO TOP RE-ENTRANT)



EMBOSSING DETAIL



ASSEMBLY VIEW

PROFILE PROPERTIES

NORMAL THICKNESS - MM	DESIGN THICKNESS (BARE STEEL) - MM	WEIGHT OF PROFILE - KG/M ²	WEIGHT OF PROFILE - KN/M ²	HEIGHT OF NEUTRAL AXIS - MM	AREA OF STEEL - MM ² /M	MOMENT OF INERTIA - CM ⁴ /M
0.9	0.86	10.03	0.098	33.6	1216	93.5
1.0	0.96	11.12	0.109	33.6	1355	102.1
1.2	1.16	13.33	0.131	33.7	1633	119.8

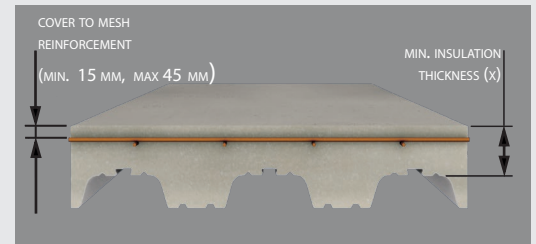
SECTION PROPERTIES ARE CALCULATED & ASSISTED BY TESTING IN ACCORDANCE WITH EUROCODE 3.

AM/NS
INDIA

FIRE INSULATION THICKNESS

MINIMUM INSULATION THICKNESS (X) OF CONCRETE (MM)

FIRE RATING	NWC	LWC
1.0 HOUR	60	60
1.5 HOUR	70	70
2.0 HOUR	80	80
3.0 HOUR	115	100
4.0 HOUR	130	115



THE IMAGE & TABLE ABOVE DETAILS THE MINIMUM INSULATION THICKNESS REQUIRED TO SUIT FIRE DESIGN CRITERIA IN ACCORDANCE WITH SCI PN005C-GB OR BS5950 PART 8.

CONCRETE VOLUME & WEIGHT

SLAB DEPTH (MM)	VOLUME OF CONCRETE (M ³ /M ²)	WEIGHT OF CONCRETE (NORMAL WEIGHT)		WEIGHT OF CONCRETE (LIGHT WEIGHT)	
		WET (KN/M ²)	DRY (KN/M ²)	WET (KN/M ²)	DRY (KN/M ²)
130	0.096	2.26	2.21	1.79	1.70
150	0.116	2.73	2.67	2.16	2.05
200	0.166	3.91	3.83	3.09	2.93

DEFLECTION - THIS TABLE IS BASED ON CONCRETE POURED TO A CONSTANT THICKNESS & DOES NOT TAKE ACCOUNT FOR DEFLECTION OF DECKING OR SUPPORTING BEAMS (AS A GUIDE TO ACCOUNT FOR THE DEFLECTION OF THE DECKING, A CONCRETE VOLUME OF SPAN/250 SHOULD BE ADDED TO THE FIGURES INDICATED). CONCRETE WEIGHT - THESE TABLES INDICATE CONCRETE WEIGHT ONLY & DO NOT INCLUDE THE WEIGHT OF DECKING OR REINFORCEMENT. CONCRETE WEIGHTS ARE BASED ON CONCRETE DENSITIES SPECIFIED IN BS EN 1991-1-1 AS FOLLOWS: NORMAL WEIGHT CONCRETE - 2550KG/M³ (WET) & 2450KG/M³ (DRY). LIGHTWEIGHT CONCRETE - 2050KG/M³ (WET) & 1950KG/M³ (DRY).

LOAD TABLES (EUROCODE)

STEEL GRADE S350 – NORMAL WEIGHT CONCRETE

TOTAL UNFACTORED APPLIED LOAD (KN/M²) MAXIMUM PERMISSIBLE SPAN (M)

SPAN CONDITION	FIRE RATING (HOURS)	SLAB DEPTH (MM)	MESH	0.9MM GAUGE				1.0MM GAUGE				1.2MM GAUGE			
				3.5	5.0	7.5	10.0	3.5	5.0	7.5	10.0	3.5	5.0	7.5	10.0
				▲ ▲											
SINGLE*	1.0	130	A142	3.125	3.125	2.796	2.519	3.383	3.383	2.870	2.585	3.746	3.746	3.011	2.711
		150	A193	3.006	3.006	3.006	2.843	3.203	3.203	3.203	2.914	3.562	3.562	3.562	3.046
		200	A393	2.688	2.688	2.688	2.688	2.866	2.866	2.866	2.866	3.219	3.219	3.219	3.219
	2.0	150	A193	3.006	3.006	2.366	2.145	3.203	3.203	2.414	2.188	3.562	3.562	2.503	2.269
		170	A252	2.883	2.883	2.649	2.410	3.054	3.054	2.695	2.453	3.407	3.407	2.788	2.531
		200	A393	2.688	2.688	2.688	2.688	2.866	2.866	2.866	2.866	3.219	3.219	3.219	3.219
DOUBLE	1.0	130	A142	3.455	3.455	2.796	2.519	3.788	3.788	2.870	2.585	4.238	4.238	3.011	2.711
		150	A193	3.230	3.230	3.141	2.843	3.546	3.546	3.219	2.914	3.996	3.996	3.366	3.046
		200	A393	2.804	2.804	2.804	2.804	3.085	3.085	3.085	3.085	3.602	3.602	3.602	3.602
	2.0	150	A193	3.230	3.116	2.366	2.145	3.546	3.180	2.414	2.188	3.996	3.296	2.503	2.269
		170	A252	3.040	3.040	2.649	2.410	3.341	3.341	2.695	2.453	3.895	3.608	2.788	2.531
		200	A393	2.804	2.804	2.804	2.804	3.085	3.085	3.085	3.085	3.602	3.602	3.407	3.116
DOUBLE	1.0	130	HE 1/50*	3.455	3.455	3.130	2.825	3.788	3.788	3.200	2.880	4.238	4.238	3.320	3.000
		150	HE 1/50*	3.230	3.230	3.230	3.230	3.546	3.546	3.546	3.290	3.996	3.996	3.750	3.400
		200	HE 1/50*	2.804	2.804	2.804	2.804	3.085	3.085	3.085	3.085	3.602	3.602	3.602	3.602
	2.0	150	HE 1/50*	3.230	3.230	2.710	2.455	3.340	3.340	2.550	2.480	3.996	3.730	2.830	2.550
		170	HE 1/50*	3.040	3.040	3.040	2.815	3.341	3.341	3.130	2.850	3.895	3.895	3.310	2.920
		200	HE 1/50*	2.804	2.804	2.804	2.804	3.085	3.085	3.085	3.085	3.602	3.602	3.610	3.440

FIGURES SHOWN IN RED ARE GOVERNED BY THE NORMAL (COMPOSITE) OR FIRE STAGES, GREATER SPANS CAN BE ACHIEVED BY INCREASING REINFORCEMENT OR FIBRE TYPE/DOSAGE.





BALAJI STEEL INDUSTRIES

No. 188 & 253, Near Omax Circle, Bommasandra Jigani Link Road,
Bommasandra Industrial Area, Bengaluru - 560105
balajisteelindustries282@gmail.com | www.balajisteelindustries.com
9606661166 | 9844066371 | 7829432429